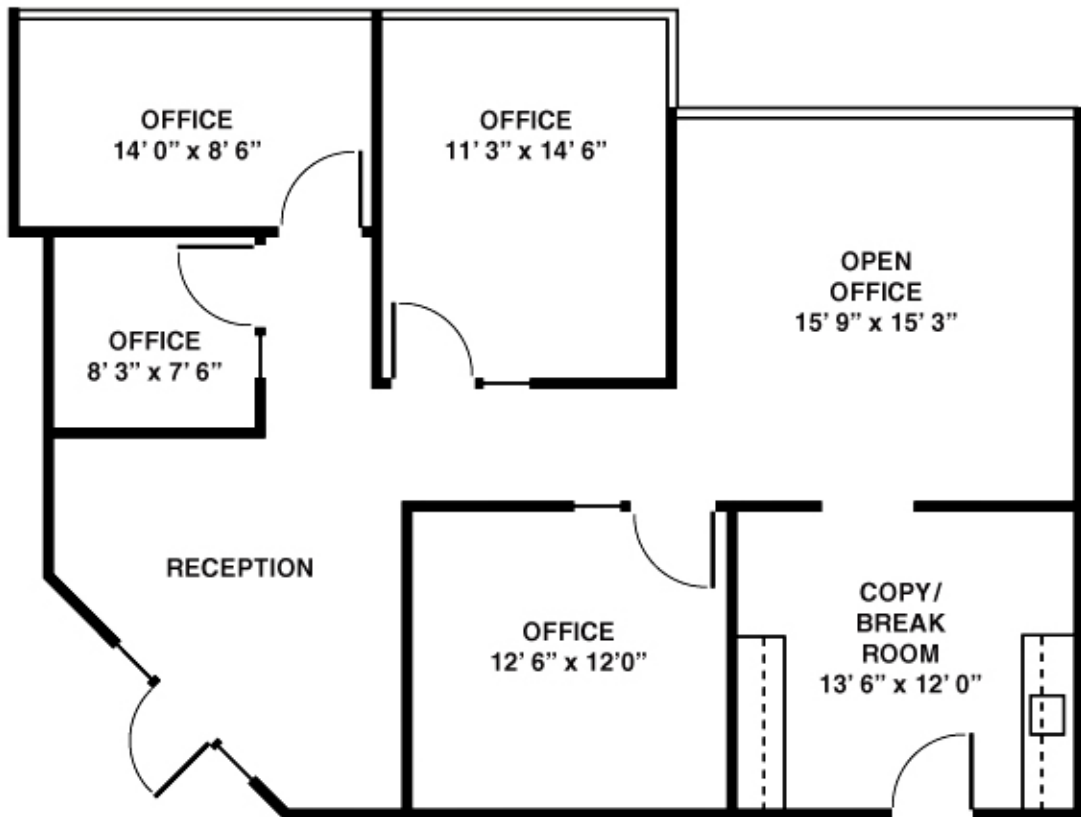


Suite 103 • 1,429 RSF

SPECIAL FEATURES INCLUDE

- Impressive, glass-walled entry off 2-story building lobby, plus second private entrance
- Large copy/break room with built-in storage cabinets and countertop with sink
- 4 private offices, plus expansive open office area
- Sidelights enhance open and light working environment
- Situated adjacent to elevator serving underground parking garage
- Aggressive lease rates and terms



Dimensions are approximate



3344 East Camelback Road
Phoenix, AZ

www.Camroad.com
602.956.2200