

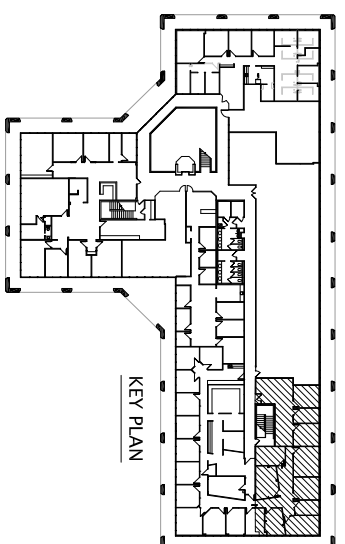
**SUITE #215**

DATE: 11.16.16

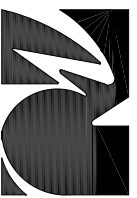
SCALE: N.T.S.



**2,852 RSF**



KEY PLAN



M C A R T H Y  
Architectural Interiors  
2850 East Camelback Road  
Phoenix, Suite 250 85016  
Telephone 602.955.4499  
Facsimile 602.955.4699  
N O R D B U R G

**4040 BUILDING**  
4040 EAST CAMELBACK ROAD  
PHOENIX, ARIZONA

**Camroad Properties**  
Contact: Portia Dempsey  
Office: (602) 956-2200  
Fax: (602) 956-1503