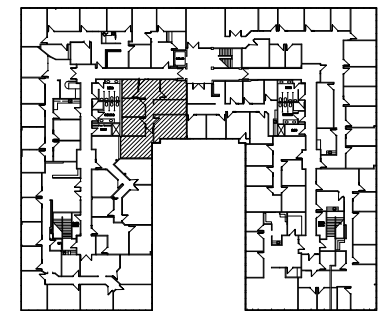


SUITE #207

DATE: 11.6.17

Scale: N.T.S.



KEY PLAN

1,427 RSF



M C C A R T H Y
 Architectural Interiors
 2850 East Camelback Road
 Suite 250
 Phoenix, Arizona 85016
 Telephone 602.955.4499
 Facsimile 602.955.4599
 N O R D B U R G

2200 BUILDING
 2200 E. Camelback Road
 PHOENIX, ARIZONA

Camroad Properties
 Contact: Portia Dempsey
 Office: (602) 956-2200
 Fax: (602) 956-1503