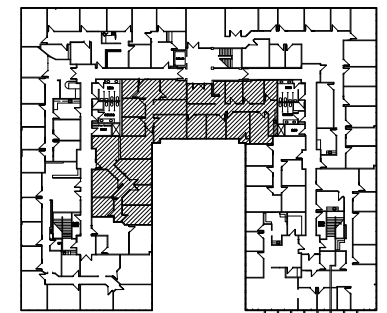


SUITE #206/207/217

DATE: 5.21.19

Scale: N.T.S.



KEY PLAN

4,520 RSF



ARCHITECTURAL
 INTERIOR DESIGN
 2850 E. Camelback Road
 Suite 250
 Phoenix, AZ 85016
 602.955.4499

2200 BUILDING
 2200 E. Camelback Road
 PHOENIX, ARIZONA

Camroad Properties
 Contact: Portia Dempsey
 Office: (602) 956-2200
 Fax: (602) 956-1503