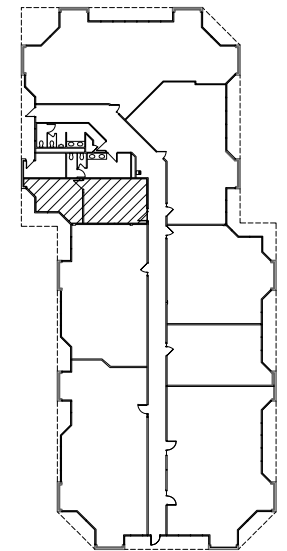


SUITE #102

DATE: 7.10.20

N.T.S.



KEY PLAN

612 RSF



ARCHITECTURAL
INTERIOR DESIGN

2850 E. Camelback Road
Suite 250
Phoenix, AZ 85016
602.955.4499

SUPERSTITION OFFICE PLAZA

4015 SOUTH McCLINTOCK DRIVE
PHOENIX, ARIZONA

Camroad Properties

Contact: Portia Dempsey
Office: (602) 956-2200
Fax: (602) 956-1503