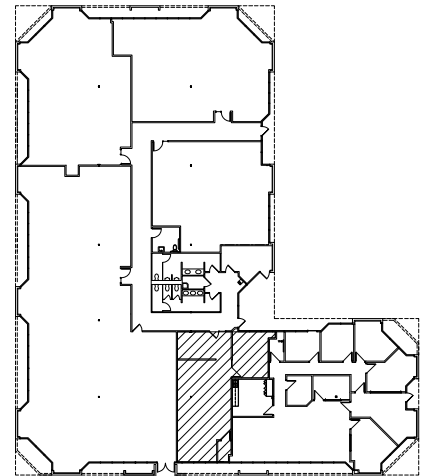


**SUITE #401**

DATE: 7.13.20

N.T.S.



KEY PLAN

1,097 RSF



ARCHITECTURAL  
INTERIOR DESIGN

2850 E. Camelback Road  
Suite 250  
Phoenix, AZ 85016  
602.955.4499

**SUPERSTITION OFFICE PLAZA**  
3923 SOUTH McCLINTOCK DRIVE  
TEMPE, ARIZONA

**Camroad Properties**

Contact: Portia Dempsey  
Office: (602) 956-2200  
Fax: (602) 956-1503